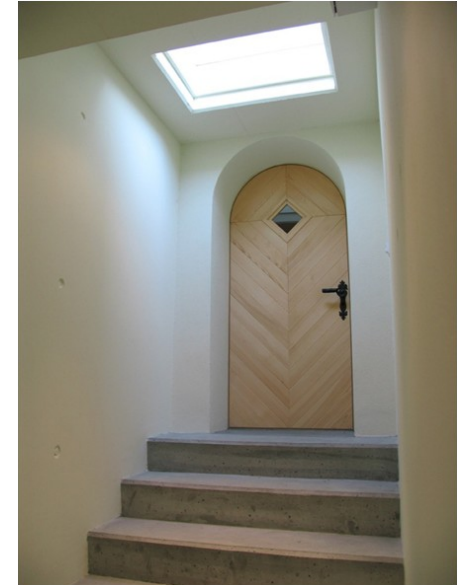


## Benefits at a Glance

- Bright daylight to the storey below
- Increased space utilisation
- Connection with the external environment
- Improved light distribution due to mirrored shaft
- Load-bearing glazing
- Floor level flush mounting system
- Thermally insulated

**Glass floors transfer light between storeys, whether inside or outside the building.**

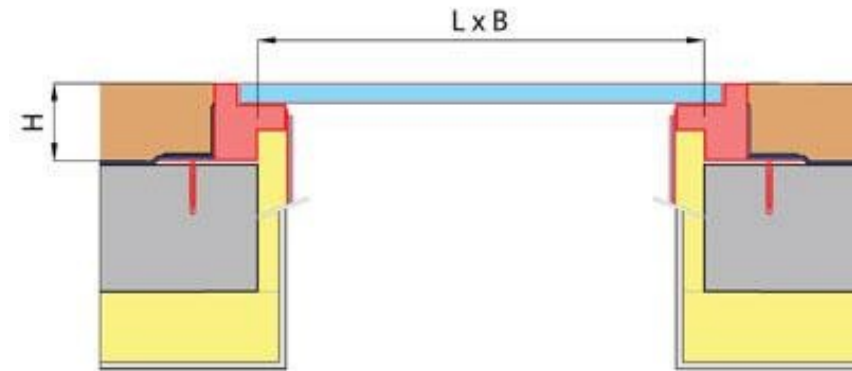


## Standard Formats

Heliobus Glass Floors are available in five standard sizes. Each consists of a chromium steel frame, a fully sealed multi-laminated glass layer and a factory fitted thermal insulation break.

Installation profiles available to suit all applications.

### Standard fitting profile with internal insulation



### Standard fitting profile with external insulation

